

LOCATION KEY

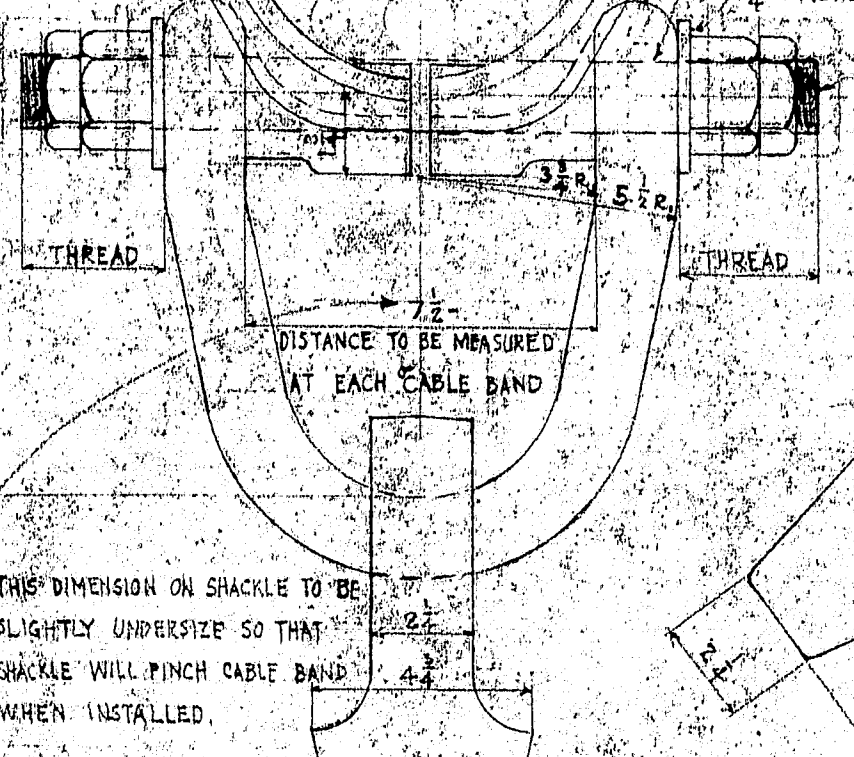
New Bolt
Special Shackle
Closed Socket

STAY CONNECTION
120 FT. FROM E. OF TOWER

STAY CONNECTION
176 FT. FROM E. OF TOWER

STAY CONNECTION
232 FT. FROM E. OF TOWER

WELD SHACKLE TO CABLE
BAND TO LINE UP WITH CABLE
STAY UNDER MAXIMUM TENSION



THIS DIMENSION ON SHACKLE TO BE
SLIGHTLY UNDER SIZE SO THAT
SHACKLE WILL FINCH CABLE BAND
WHEN INSTALLED.

CABLE BAND CONNECTION
FOR STAY CABLE

SECTION C-C

SECTION A-A

BRACES AT MAIN SPAN

ELEVATION

BRACKET AT TOWER
SCALE 1/2" = 1'

NOTES:-

THE 12" DIAMETER ROPES SHALL HAVE A GROSS METALLIC AREA OF NOT
LESS THAN 0.72 SQ. IN., A MINIMUM ULTIMATE STRENGTH OF 124,000 LBS., AND
THE STRANDS SHALL BE MEASURED TO THE LENGTHS GIVEN ON THIS DRAWING
UNDER A TENSION OF 160,000 LBS. (AND THEN CUT AND SOCKETED).
THE NEW BOLTS TO BE PLACED IN CABLE BANDS SHALL BE OF NICKEL ALLOY WITH A
MINIMUM ULTIMATE STRENGTH OF 100,000 LBS. PER SQ. IN. AND A MINIMUM YIELD POINT
OF 50,000 LBS. PER SQ. IN. THESE BOLTS SHALL NOT BE HEAT TREATED. THEY SHALL
BE TIGHTENED TO A TENSION OF NOT LESS THAN 50,000 LBS. PER BOLT.

REQUIRED:-

- 4 - ROPE STAYS - "A", WITH CONNECTIONS
- 4 - ROPE STAYS - "B", WITH CONNECTIONS
- 4 - ROPE STAYS - "C", WITH CONNECTIONS
- 4 BRACES AND CONNECTIONS

RIVETS 7/8"

ADJUST STAYS FOR STRESS OF 10,000 LBS. EACH
USE FOLLOWING VERTICAL SPS. AT E.
STAY "A" - 0.734
STAY "B" - 1.174
STAY "C" - 1.850

NOTE "A"

LENGTHS OF STAYS SHOWN ABOVE ARE AS ON SHOP DWG.
DUE TO ERROR IN FABRICATION, STAYS WERE CUT
3" TOO LONG. THEY WERE LATER CUT AND
RESOCKETED, SHORTENING EACH BY FOLLOWING:
STAY "A" - 12 1/2"
STAY "B" - 13 1/2"
STAY "C" - 14 1/2"

PWA PROJECT NO. ME-1010D
DEER ISLE - SEDGWICK BRIDGE DISTRICT
BRIDGE OVER EGGEMOGGIN REACH
FROM LITTLE DEER ISLE TO SEDGWICK
HANCOCK COUNTY, MAINE

CABLE STAYS
FOR MAIN SPAN
SCALES AS NOTED

ROBINSON AND STEINMAN
ENGINEERS
NEW YORK, N.Y.

DRAWING NUMBER
RS3310-302
OCT. 18, 1930

